

3 Enjoy

Start Playback

A Direct Playback

If you are playing back the titles in HDD, press **HDD** first, then proceed to step 2.
If you are playing back the titles in DVD, press **DVD** first.

- 1 Insert a disc.
- 2 Press **PLAY** to start playback.
- 3 Press **STOP** once to stop playback temporarily.

B Playback from the Title List

If you are playing back the titles in HDD, press **HDD** first, then proceed to step 2.
If you are playing back the titles in DVD, press **DVD** first.

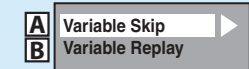
- 1 Insert a disc.
- 2 For HDD, press **TITLE** to call up the title list. For DVD, the title list will automatically appear when you insert a disc. Otherwise, press **TITLE** or **DISC MENU**.
- 3 Use **▲ / ▼ / ◀ / ▶** to select a desired title, then press **OK**.
- 4 Use **▲ / ▼** to select "Play" (for DVD), or select "Resume Playback" or "Play from Start" (for HDD), then press **OK**.
- 5 Press **STOP** once to stop playback temporarily.

C Variable Skip / Variable Replay

During playback, you can skip forward or backward by the amount of time you set in the "Playback" menu.

To assign **SKIP** or **REPLAY** to skip or rewind by a certain amount of time;

- 1 Press **SETUP** and use **▲ / ▼** to select "General Setting", then press **OK**.
- 2 Use **▲ / ▼** to select "Playback", then press **OK**.
- 3 Use **▲ / ▼** to select "Variable Skip / Replay", then press **OK**.
- 4 Use **▲ / ▼** to select a desired item, then press **OK**.



- 5 Use **▲ / ▼** to select the desired amount of time, then press **OK**.

To actually use this function during playback;
During playback, press **SKIP** if you want to skip forward. Press **REPLAY** if you want to skip backward.

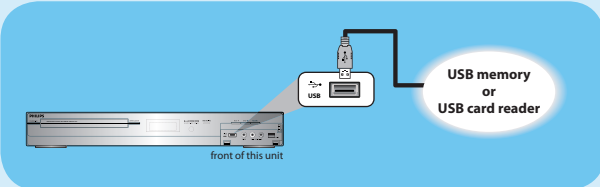
D Time Shift Playback (HDD only)

You can play back a title being recorded from the beginning while recording continues.

- 1 During HDD recording, press **PLAY**.
Playback of the title you are recording will start from the beginning.
- 2 Elapsed playback time will be displayed in the front panel display.
- 2 To stop the playback, press **STOP** once.
- 3 The front panel display will switch back to show the elapsed recording time.
- 4 If you press **STOP** twice, it will stop the recording.

E Playing Back a USB Device with MP3 / Windows Media™ Audio / JPEG Files

- 1 Press **SOURCE / USB** repeatedly to select the appropriate external input channel for USB device.
- 2 Plug in your USB device.



- If USB memory is connected;
- file list will appear.
- If USB card reader is connected;
- drive selection screen will appear.
Select the desired drive, then press **OK** or **▶**.
- file list will appear.
- To exit the file list, press **STOP**.
 - To resume the file list, press **TITLE**.

- 3 Use **▲ / ▼** to select a desired folder or track / file, then press **OK**.

When selecting track / file:
Playback will start.

When selecting the folder:
The files in the folder will appear.
Use **▲ / ▼** to select the file or folder you want to play back, then press **OK**.

3 Enjoy

Editing

A Deleting a Title

If you are editing the titles on HDD, press **HDD** first.
If you are editing the titles on DVD, press **DVD** first.

- 1 Press **TITLE**.
- 2 Use **▲ / ▼ / ◀ / ▶** to select a desired title to delete, then press **OK**.
If you are editing the titles on HDD, proceed to step 4.
If you are editing the titles on DVD, proceed to step 3.
- 3 Use **▲ / ▼** to select "Edit", then press **OK**.
- 4 Use **▲ / ▼** to select "Title Delete", then press **OK**.
Confirmation message will appear.
Select "Yes", then press **OK**.
Final confirmation message will appear.
Select "Yes", then press **OK**.

B Deleting Selected Titles (HDD only)

- 1 Press **HDD**, then press **TITLE**.
- 2 Use **▲ / ▼ / ◀ / ▶** to select any title, then press **OK**.
- 3 Use **▲ / ▼** to select "Delete Multiple Titles", then press **OK**.
- 4 Use **▲ / ▼ / ◀ / ▶** to select the title you want to delete, then press **OK**.
- 5 Repeat step 4 until you select all the titles you want to delete.
- 6 Press **CLEAR**.
Confirmation message will appear.
Select "Yes", then press **OK**.
Final confirmation message will appear.
Select "Yes", then **OK**.

Need help?

User Manual

See the user manual that came with your Philips recorder.

Online

Go to www.philips.com/usasupport.

Hotline

Call 1-888-PHILIPS (1-888-744-5477) for our operators.



Types of Media Used on This Recorder

- * DVD-RW/-R recorded in VR mode or non compatible recording format are not playable.
- * DVD-RW recorded in the mode other than +VR is not recordable on this unit unless you erase all contents in the disc (refer to page 62 in the User Manual).
- * DVD-R recorded in the mode other than +VR is not recordable on this unit.

Type	Playback	Record	Edit
HDD	✓	✓	✓
DVD+RW	✓	✓	✓
DVD+R	✓	✓	✓
DVD-RW	✓	✓	✓
DVD-R	✓	✓	✓
DVD+R Double Layer	✓	✗	✗
DVD-video	✓	✗	✗
CD-DA (audio CD)	✓	✗	✗
video CD	✓	✗	✗
USB device	✓	✗	✗

HDD & DVD Player / Recorder with Digital Tuner

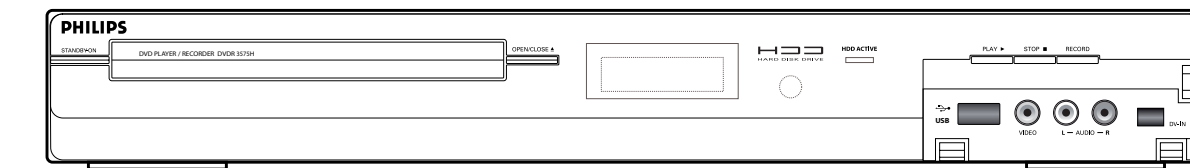
DVDR3575H/37

Quick Start Guide

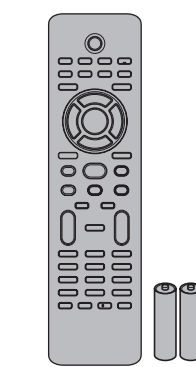


- 1 Connections
- 2 Basic Setup
- 3 Enjoy

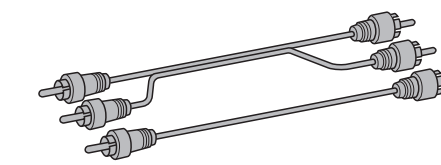
What's in the box?



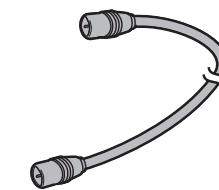
HDD & DVD Player / Recorder with Digital Tuner



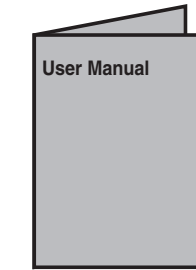
Remote Control with Batteries (AAAx2)



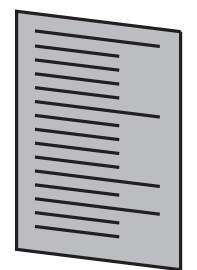
RCA Audio / Video Cables



RF Coaxial Cable



User Manual



Quick Start Guide

PHILIPS

1 Connections

Start with the "Basic Connection".

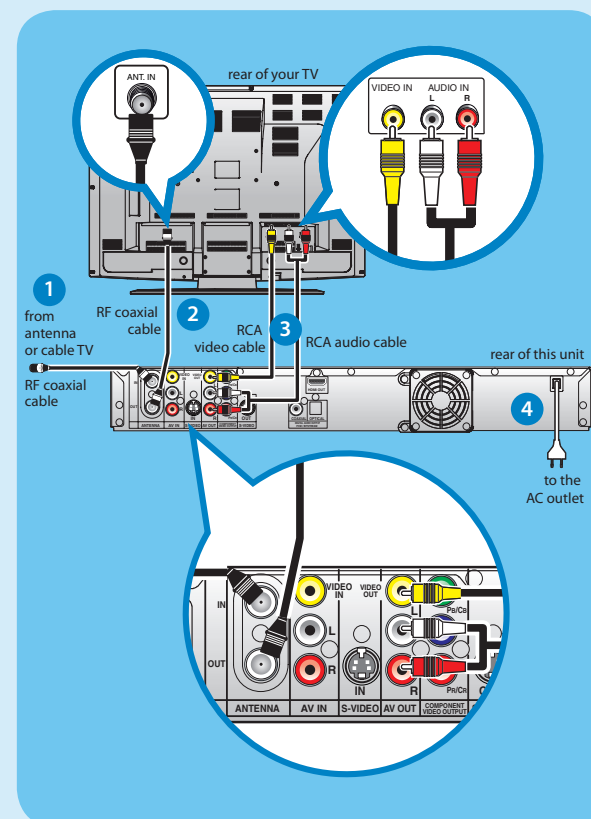
Basic Connection

A Before Connecting

- 1 Disconnect the power cords of the devices from the AC outlet.
- 2 Disconnect RF coaxial cable from antenna input jack of your TV.

B Connecting

Make the connections as illustrated below.



- 1 Connect the RF coaxial cable from the TV antenna or cable TV to the ANTENNA IN jack of this unit.
 - 2 Use RF coaxial cable to connect ANTENNA OUT jack of this unit to the antenna input jack of your TV.
- AND**
- 3 Use RCA audio / video cables to connect the AV OUT jacks of this unit to the audio / video input jacks of your TV.
 - 4 Plug in the power cords of the devices to the AC outlet.

RF Modulator Connection

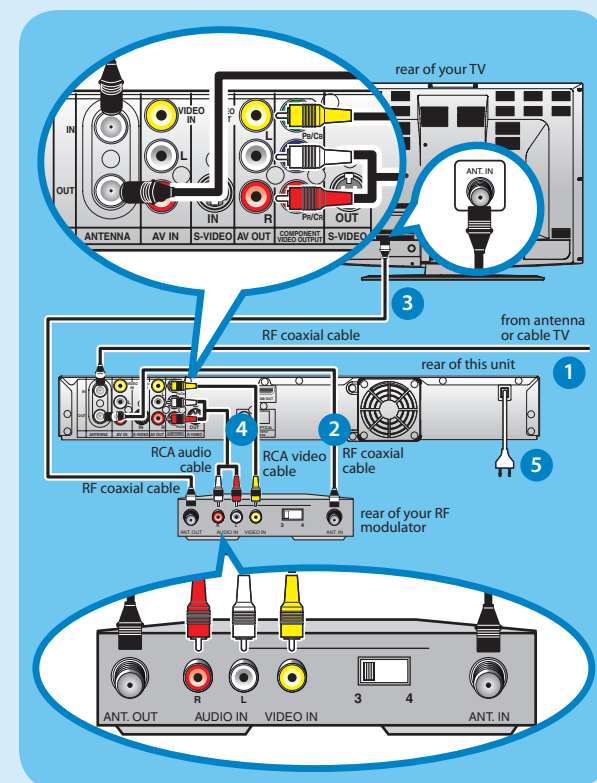
If your TV has antenna in jack only, it is still possible to connect this unit to your TV by using a commercially available stereo audio / video RF modulator. In this case, follow the instructions below.

A Before Connecting

- 1 Disconnect the power cords of the devices from the AC outlet.
- 2 Disconnect RF coaxial cable from antenna input jack of your TV.

B Connecting

Make the connections as illustrated below.



- 1 Connect the RF coaxial cable from the TV antenna or cable TV to the ANTENNA IN jack of this unit.
- 2 Use RF coaxial cable to connect ANTENNA OUT jack of this unit to the antenna input jack of your RF modulator.
- 3 Use RF coaxial cable to connect antenna output jack of your RF modulator to the antenna input jack of your TV.
- 4 Use RCA audio / video cables to connect the AV OUT jacks of this unit to the audio / video input jacks of your RF modulator.
- 5 Plug in the power cords of the devices to the AC outlet.

* RF modulator is not supplied with this unit. You need to purchase it at your local store.

Connection to a Cable / Satellite Box

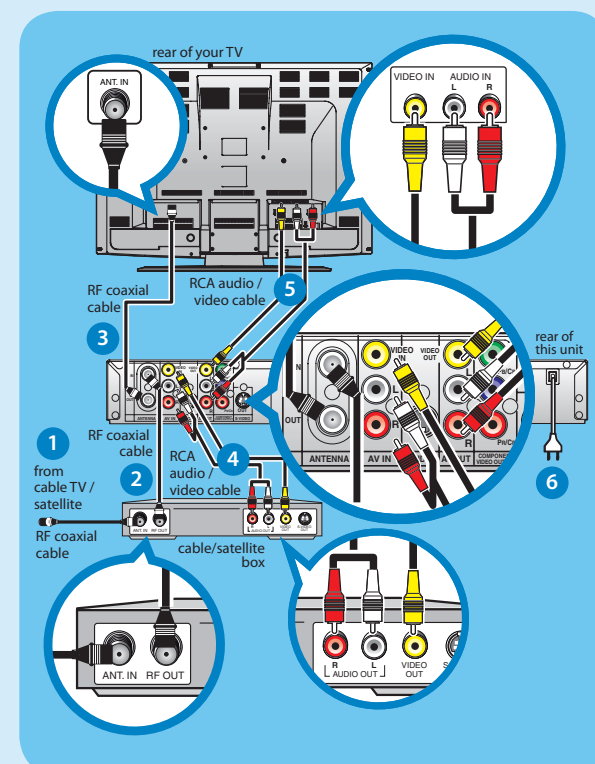
If you have a Cable / Satellite Box, follow the instructions below.

A Before Connecting

- 1 Disconnect the power cords of the devices from the AC outlet.
- 2 Disconnect RF coaxial cable from antenna input jack of your TV.

B Connecting

Make the connections as illustrated below.



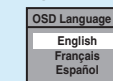
- 1 Connect the RF coaxial cable from the cable TV / satellite to the antenna input jack of your cable / satellite box.
- 2 Use RF coaxial cable to connect the RF output jack of your cable / satellite box to ANTENNA IN jack of this unit.
- 3 Use RF coaxial cable to connect ANTENNA OUT jack of this unit to the antenna input jack of your TV.
- 4 Use RCA audio / video cables to connect the audio / video output jacks of your cable / satellite box to the AV IN jacks of this unit.
- 5 Use RCA audio / video cables to connect the AV OUT jacks of this unit to the audio / video input jacks of your TV.
- 6 Plug in the power cords of the devices to the AC outlet.

* Refer to the user manual for other connection methods.

2 Basic Setup

A Finding the Viewing Channel

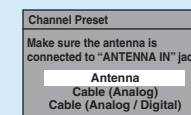
- 1 Press **STANDBY-ON** to turn on the unit.
- 2 Turn on your TV.
- 3 If connected to your VCR, make sure it is switched off or in standby mode before proceeding.
- 3 Press "2" on the TV's remote control, then press channel down button repeatedly until you see the "Initial Setup" menu. This is the correct viewing channel (external input channel) for the recorder.



* Refer to your TV's user manual for details.

B Initial Setting

- 1 Use Δ / ∇ to select your desired language, then press **OK**.
- 2 Use Δ / ∇ to select the type of broadcasting signal, then press **OK**.



The unit will start getting channels available in your area.

Antenna:

(When using antenna)

The channels broadcasted in analog TV and digital TV are automatically scanned and memorized. Only the receivable channels in the area will be memorized.

Cable (Analog):

(When using basic cable)

The channels broadcasted in analog CATV are automatically scanned and memorized.

Cable (Analog / Digital):

(When using basic cable)

The channels broadcasted in analog CATV and digital CATV are automatically scanned and memorized.

Entry screen for the clock setting will appear.

- 3 Use Δ / ∇ to select an item to set, and use Δ / ∇ to select the contents to suit your preference, then press **OK** when you finish setting all the contents.

Your Philips recorder is now ready for use!

3 Enjoy

Inserting Discs

- 1 Press **OPEN/CLOSE** to open the disc tray.
- 2 Place the disc on the disc tray with its label side facing up.
- 3 Press **OPEN/CLOSE** to close the disc tray.



Start Recording

A Recording from the TV

If you are recording to the HDD, press **HDD** first, then proceed to step 2.
If you are recording to a disc, press **DVD** first.

- 1 Insert a recordable disc (make sure the disc is compatible with this unit).
- 2 Press **REC MODE** to select a recording mode.
- 3 Select the appropriate external input channel by pressing **SOURCE / USB** or **CH + / -**.
- 4 To record a TV programme:
Press **DTV/TV** to select analog TV or digital TV, then use **CH + / -** or the **Number buttons** to select a desired channel to record.
- 4 Press **REC** to start recording.
Press **REC** again to make recording for 30 minutes. Press **REC** repeatedly to extend the recording time by 30 minutes for each press.
- 5 Press **STOP** to stop the recording.

B Pause Live TV (HDD only)

With **PAUSE LIVE TV**, even if you leave your couch while you are watching TV through this unit, you can come back and watch the rest of the program from right where you left at any convenient time with just one touch of a button.

B Pause Live TV (HDD only) (cont'd)

- 1 When you leave the TV, press **PAUSE LIVE TV** twice.
With the first press, the unit will start recording the TV broadcast.
With the second press, the unit will be in the pause mode as soon as it starts the time shift playback.
 - 2 When you come back, press **PAUSE LIVE TV** again.
 - 3 Press **STOP** once to resume live TV.
Press **STOP** twice to stop pause live TV mode.
- You can also use the special playback functions such as **REW**, **FFW** etc. during pause live TV mode.

Start Dubbing

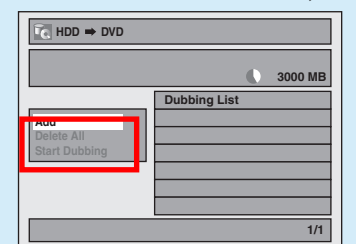
Preparing for dubbing (HDD to DVD):

- Insert a recordable DVD.

Preparing for dubbing (DVD to HDD):

- Insert a disc to be dubbed.

- 1 Press **SETUP** in stop mode.
- 2 Use Δ / ∇ to select "Dubbing", then press **OK**.
- 3 Use Δ / ∇ to select a desired dubbing direction, then press **OK**.
- 4 Use Δ / ∇ to select "Add", then press **OK**.



- 5 Use Δ / ∇ / Δ / ∇ to select a desired title, then press **OK**.
The title is now registered in the dubbing list.
- 6 Repeat steps 4 to 5 until you register all the titles to be dubbed.
- 7 After adding all the titles you want, use Δ / ∇ to select "Dubbing Start" in the dubbing menu, then press **OK**.
- 8 Use Δ / ∇ to select a desired recording mode, then press **OK**.
Confirmation message will appear.
- 9 Use Δ / ∇ to select "Yes", then press **OK**.
- 10 To stop the dubbing in progress:
Press **STOP** on the front panel.